



COMING SOON...



ACCREDITATION VISITS OCTOBER 21 - JANUARY 2022

We have spaces on the following Visits but they are filling up fast!

27th October 2021

Community Heart Failure Team - 1 space

4th November 2021

Victoria Ward (Forensics) - 3 spaces

7th December 2021

Loxford Ward (Forensics) - 3 spaces

8th December 2021

Bevan Ward (City and Hackney) - 2 space

8th December 2021

Ruth Seifert Ward - 4 spaces, including Lead

9th December 2021

Clozapine Clinic 3 spaces, including Lead

13th December 2021

Coborn Centre (CAMHS) - 4 spaces, inc lead

Too sign up for a visit, please respond via email (elft.qa@nhs.net) and let us know which visit you are available for.

IN THIS ISSUE:

RESTARTING
ASSESSORS TOGETHER

ACCREDITATION VISITS IN
OCTOBER AND NOVEMBER

UPDATES ON SERVICE
USER LED ACCREDITATION



ACCREDITATION UPDATES

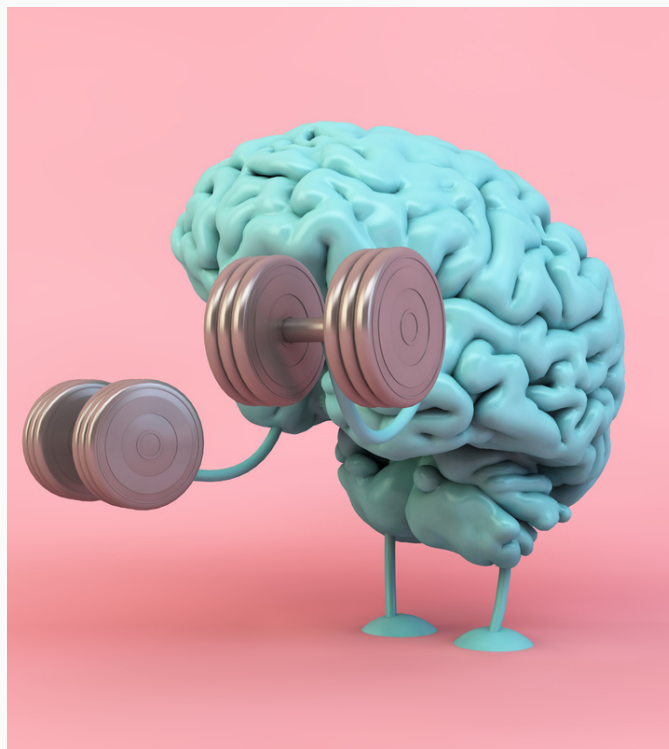
ASSESSORS TOGETHER

We will be re-starting Assessors together meetings from 2nd November. This is a very important meeting to attend as we will be discussing issues faced by Assessors and by the QA team in recent times. We will also be welcoming feedback from Assessors in how to build a fitter, faster and stronger team for the future!

Along with a feedback session, the meeting will feature important updates from the team.

We would love to see as many of you as possible on the 2nd and the more of you that attend the stronger we all become as a team!

Speak to the QA team to sign up **today!**
elft.qa@nhs.net



"Find a group of people who challenge and inspire you, spend a lot of time with them, and it will change your life forever."

- Amy Poehler

NEW ASSESSOR TRAINING

We have lost a few Assessors over the last year for a number of reasons. Covid has not helped us and a lot of people and services have adapted to a new way of living and this including what working looks like to them

We have also had a lot of our more experienced Assessors moving on to bigger and better things. This means that we will be recruiting some new Assessors to the team.

We have training dates set for late October, the interest and uptake has been very encouraging. We hope, once trained you can help us welcome the new Assessors to the team and take them under your wings.

Contacts



Quality Assurance Team elft.qa@nhs.net

QA Micro-site qa.elft.nhs.uk

Twitter twitter.com/ElftQA

Service User QA Lead matt.preston1@nhs.net

PP inquiries elft.peopleparticipation@nhs.net

ELFT Services www.elft.nhs.uk

Mental Health Crisis Lines

Newham 020 7771 5888

Tower Hamlets 0207 771 5807

Hackney 020 8432 8020

Luton 01582 556 971

Bedford and Mid-Bedfordshire 01234 315 691

Information on Covid-19 www.nhs.uk
www.who.int

NHS 111 Call 111 (24 hours)

Sane Line 0845 767 8000 (6pm - 11pm)
www.sane.org.uk

Samaritans 08457 90 90 90 (24 hours)
020 7771 5807
www.samaritans.org